

# Proposed Bulldog Mine

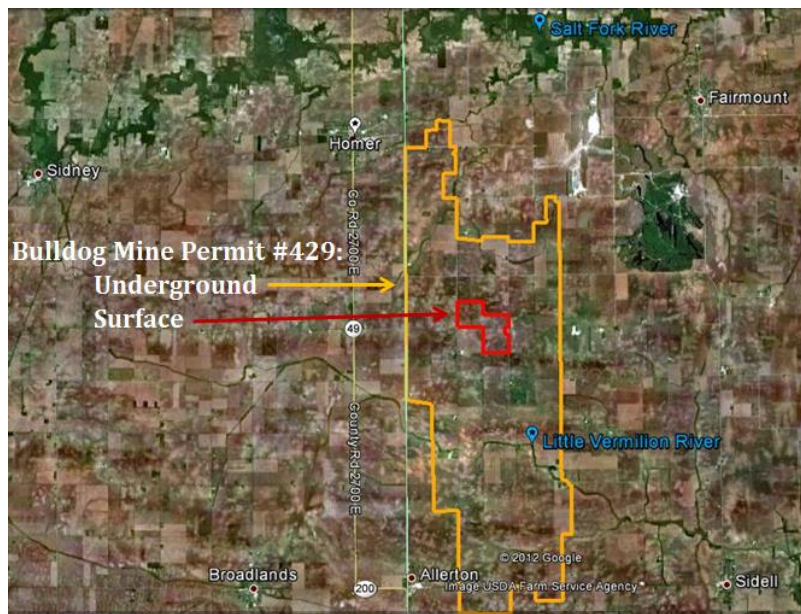
## Sunrise Coal (Hallador Energy) Threatens Farmland, Water, and Communities



Sunrise Coal is modeling the proposed Bulldog Mine after their existing Carlisle Mine near Carlisle, Indiana, shown above

### What comes with a local coal mine?

- Removing large quantities of water from local streams could impact drinking water supplies for downstream communities, threaten wildlife, and impair recreation.
- Groundwater supplies may also be threatened by proposed withdrawals and discharges
- Coal slurry pits up to one square mile and 100 feet high containing heavy metals and chemicals used during the washing process threaten drinking water supplies by seeping into ground water wells and breaching retaining walls at storage pits.
- Prime farmland would be taken out of production forever, and the coal mining process damages tile drains and eventually causes subsidence (sinking of the land) lowering productivity of the rich soil in this region.
- Coal dust that would blow off the coal piles southeast of Homer at the processing facility and off the trucks and rail cars during transit threaten public health. Coal dust is known to cause respiratory problems, such as asthma, and is known to contain heavy metals including mercury, arsenic, selenium, and chromium
- Lax enforcement of state and federal regulations of mining activities and water quality is inadequate to protect us.



Working to protect Illinois rivers for people, fish, and wildlife.

[www.prairierivers.org](http://www.prairierivers.org)  
217.344.2371  
[info@prairierivers.org](mailto:info@prairierivers.org)

Protecting Vermillion and Champaign Counties from coal mining

[Standuptocoal.org](http://Standuptocoal.org)  
[standuptocoal@gmail.com](mailto:standuptocoal@gmail.com)



# What You Can Do

## Protect Local Waterways and Water Supplies

Sunrise Coal is seeking approximately 750,000 to 1,000,000 gallons per day from area waterways and water supplies for a raw water supply for onsite mining operations, including washing coal at their proposed coal mine. The mine will also discharge as much as 10% of the water withdrawn into receiving streams, laden with salts, heavy metals and suspended solids after use at the mine site. Potential discharge locations include the Salt Fork of the Vermilion River and the Little Vermilion River.

Area residents and farmers are concerned that Sunrise's underground coal mine and surface coal washing and waste disposal will deplete water resources, pollute cherished waterways, and damage farmland.

**Contact your Champaign or Vermillion County Board Member** about the proposed coal mine. Let them know you support protecting our water resources and farmland from the coal mine. You can contact the county board office at  
Champaign: (217) 384-3772                      Vermillion: (217) 554-6000

Contact information for the county board members can be found at  
[www.co.champaign.il.us/countybd/cbmembers.pdf](http://www.co.champaign.il.us/countybd/cbmembers.pdf)  
[www.co.vermilion.il.us/ctybrd01.htm](http://www.co.vermilion.il.us/ctybrd01.htm)

**Join Us on a Tour** to the site of a Sunrise Coal mine in Carlisle, Indiana. This will be a chance to explore the impacts that a room and pillar mine has on the land, water, health, and quality of life of a community.

While the tour will not enter the mine site, it will identify the processes and impacts of coal mining and allow participants to see firsthand how a coal mine blights a community.

For more information, contact Tyler Rotche: [trotche@prairierivers.org](mailto:trotche@prairierivers.org)

**Learn More and Get Involved** Visit [standuptocoal.org](http://standuptocoal.org) and [prairierivers.org](http://prairierivers.org) and attend an upcoming event. Sign the petition at [standuptocoal.org/petition](http://standuptocoal.org/petition)

### *More Information*

For more information on this issue, contact

**Tyler Rotche**

*Prairie Rivers Network*

[trotche@prairierivers.org](mailto:trotche@prairierivers.org)

217.344.2371

**Jonathan Ashbrook**

*Stand Up to Coal*

[jonathan@ashbrook.biz](mailto:jonathan@ashbrook.biz)

**Suzanne Smith**

*Stand Up to Coal*

[suzanne56smith@gmail.com](mailto:suzanne56smith@gmail.com)