

## My Work in the Light of Herbert and Marianne Brün

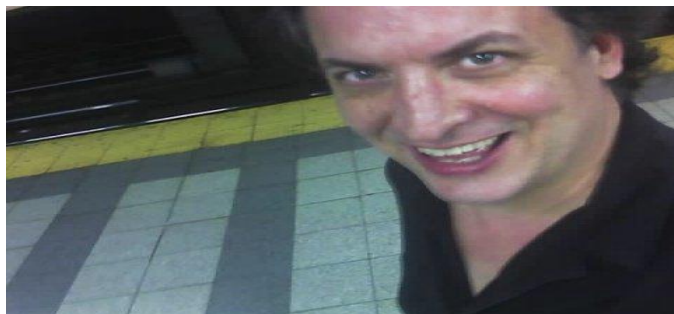
Fall 2014 Series by Local & Visiting Artists/ Activists

The Herbert Brün Society & the School for Designing a Society are excited to offer their new joint venture beginning this Fall. National, international and local artists/activists--former students of Herbert or Marianne Brün--will be offering 8 interactive presentations/workshops to talk about their work and the influence of Herbert or Manni on it.

*Artist/activists this fall will include:*

**Pat Daugherty**, New York City

composer, piano performer activist, performer **Oct. 9**



**Pat Daugherty** is a composer, pianist, painter, playwright, dancer. He toured with Gil Scott-Heron in the mid 1980s and has recently recorded with Ornette Coleman on Italian artist Mark Kostabi's project. He accompanies for the Martha Graham dance company and composes for theater, dance and his group New York Electric Piano. He studied music composition at the University of Illinois with Herbert Brün and Salvatore Martirano, and during his time in Champaign-Urbana he organized a series of concerts and workshops matching local composers and community groups called The Song of Art.

<b>Paulo Lima</b> , Salvador, Brazil composer, activist	Oct. 16
<b>Allen Otte/Bonnie Whiting</b> , Cincinnati, Cincinnati Conservatory Faculty, percussionist	Oct. 23
<b>Patricia Repar</b> , UNM, Albuquerque, New Mexico faculty, composer, healthcare activist	Nov. 6
<b>Mark Sullivan</b> , Michigan State, E. Lansing composer, poet, photographer, activist	Nov. 13
<b>Kirk Corey</b> , Iowa City, Iowa composer, piano performer, activist	Nov. 20
<b>Susan Parenti/Ya'aqov Ziso</b> , Urbana, Illinois composers, activists, protest organizers	Dec. 4

These presentations will be on **Thursdays, 7-9p**, at the **Herbert Brün House**,  
**122 Franklin Street, Urbana**  
starting **Thursday October 2nd**, ending **Thursday December 4th**.

### The series is available:

**Interactively**--live at the Herbert Brün House:

1. subscription for all 8 presentations (suggested \$80\*)
2. attend a single presentation (suggested \$12\*)

**Non-interactively**, view only (Q&A at the end of the presentation):

1. subscription to online streaming online of all 8 sessions (\$40\*)
2. attend a single streaming online presentation (suggested \$8\*)

No one turned away for lack of funds:

**3. Pay What You Can**

<http://inthelightof.bpt.me>

Revenues from these series will reimburse travelling expenses of our visiting presenters, and ongoing projects at the **Herbert Brün Society**.